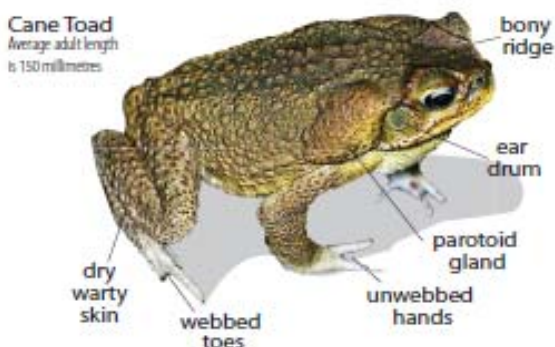




CANE TOAD FACT SHEET

FROG OR TOAD?

Many people have difficulty in telling native frogs and Cane Toads apart, because they share similar features such as warty skin, a visible ear drum or webbed toes. Unlike native frogs, adult Cane Toads have all of the features labelled below:



Frogs commonly mistaken as Cane Toads in New South Wales:



Spotted Marsh Frog
Limnodynastes tasmanensis



Common Froglet
Crinia signifera

WHY ARE THEY A PROBLEM?

Cane Toads (*Bufo marinus*) are a serious threat to the unique native wildlife in New South Wales because:

1. Cane Toads invade the habitats of native frogs and eat their food. They have a huge appetite, and even eat small lizards and frogs.
2. Cane Toads poison other animals who try to eat them, including, goannas, kookaburras, herons and domestic pets.
3. Native frogs are killed when mistaken for Cane Toads.
4. There are few cane toad predators in Australia.

For more information go to:

www.environment.nsw.gov.au or

www.amonline.net.au

Report any suspected sightings to Sutherland Shire Council or the National Parks & Wildlife Service on 9668 2000.

Information supplied by the National Parks & Wildlife Service. Photographs: John Pumpars

INFORMATION FROM YOUR COUNCIL

Tel 02 9710 0333 Fax 02 9710 0265
Email ssc@ssc.nsw.gov.au www.sutherland.nsw.gov.au
4-20 Eton Street, Sutherland NSW 2232
Locked Bag 17, Sutherland NSW 1499



Environment,
Climate Change & Water
National Parks & Wildlife Service

